



ASSOCIATED SIXTH FORM

ST AIDAN'S & ST JOHN FISHER, HARROGATE



# WHAT'S NEXT?

Life After School



# What we will cover...



“Portfolio Careers”



Apprenticeships Overview



Introduction to HE



Applications Timeline



# Portfolio Careers

*The UK has moved far from the 'job-for-life' attitude*



*workers now experience an average of **6 different job roles** in their working lives, requiring **resilience, adaptability and change management***



# Example pathway – Mr. Stephen



**HM Royal Marines**  
Direct Graduate  
Officer Entry

**University of Durham**  
BA (HONS) Music

**Sixth Form**  
**A Levels**  
Music, History,  
Maths, General  
Studies

**Waitrose**  
Store Manager

**M&S**  
Store Manager

**West Yorkshire**  
**Police**  
Inspector

**Yorkshire Causeway**  
**Schools Trust**  
Trust Estates  
Manager

**Red Kite Learning Trust**  
Business and Operations  
Manager

**ASDA**  
Store Manager

# Careers Department Support

Post-18  
Options

Higher Education

Further Education

Post-18 Apprenticeship

Employment

Gap Year

what's  
**your**  
next  
move?

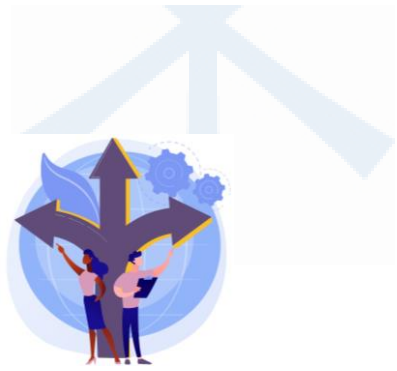


ASSOCIATED SIXTH FORM

ST AIDAN'S & ST JOHN FISHER, HARROGATE



# Apprenticeships



# Apprenticeships

- Traditional Trades

- Construction – electrical engineering, plumbing, joinery, bricklaying
- Hairdressing
- Childcare ...etc...

- Professional Roles

- Quantity Surveying
- 3D Design
- Accountancy
- Law
- Civil Engineering
- Architecture
- Marketing
- I.T.



# Apprenticeships Overview...

## THERE ARE FOUR LEVELS OF APPRENTICESHIPS

INTERMEDIATE

**LEVEL  
2**

Equivalent to  
5 GCSE's  
grade A\* - C/4

ADVANCED

**LEVEL  
3**

Equivalent to  
2 A'Levels

HIGHER

**LEVELS  
4, 5, 6 & 7**

Equivalent to a  
Foundation  
Degree or above

DEGREE

**LEVELS  
6,7**

Equivalent to a  
Batchelor's/  
Masters Degree





# Apprenticeships...

- Typically, apprentices are **employed full-time** and attend college/university on **day release/block placement**
- Educationally, **not a 'second best'** - standard of examination and qualification achieved are the same as full time HE study
- Apprentice **reinforce their learning daily** through paid employment
- Everyday access to work colleagues who are all **'industry experts'**
- **Not a 'soft option'** - requires resilience, self-motivation and excellent time management skills



# Apprenticeships...



THE  
APPRENTICESHIP  
DIRECTORY



GOV.UK

NGTU

NOT GOING TO UNI

PROSPECTS



GetMyFirstJob

Where it all starts.

UCAS

GO  
CONSTRUCT

Amazing  
Apprenticeships

indeed



ASSOCIATED SIXTH FORM

ST AIDAN'S & ST JOHN FISHER, HARROGATE



# Degree Apprenticeship Examples...



LEEDS BECKETT  
UNIVERSITY

## Civil Engineering Degree Apprenticeship

- ICE accredited Design Engineering or Site Management pathways



WARWICK  
THE UNIVERSITY OF WARWICK

## Social Work Degree Apprenticeship

- working for a local authority/children's social care department



UNIVERSITY OF  
BIRMINGHAM

## Computer Science with Digital Technology Partnership Degree Apprenticeship

- working in partnership with PriceWaterhouseCoopers



# Recent appointments...



GRANTLEY HALL



# Application Process...

Careers Meeting

Research, website registrations and employment events

Extra-curricular activities

CV and application letter preparation

Autumn Year 13 Initial vacancies advertised

January Onwards Bulk of vacancies are released

Applications

Interview Support



# An Introduction to Higher Education

---

**FRED BINLEY**

HEAD OF UK STUDENT RECRUITMENT

RECRUITMENT & ADMISSIONS, LANCASTER UNIVERSITY

# 1. Experience

It's all about finding the right one

---

# End of term quiz!

---



Can you rank, in descending order, the following universities as listed in the 2025 Complete University Guide?

Exeter ...?

Bath ...?

Liverpool ...?

Lancaster ...?

Manchester ...?

Newcastle ...?

Cambridge ...?





## End of term quiz!

---

Can you rank, in descending order,  
the following universities as listed in  
the 2025 Complete University Guide?

Exeter	...?	14
Bath	...?	8
Liverpool	...?	19
Lancaster	...?	10
Manchester	...?	22
Newcastle	...?	26
Cambridge	...?	1

# A Top-Ranking Global University

---



## 2. Questions

Here's some things to think about

---



## Home or away...?

---

“Students who stay at home choose from a limited selection....Better to select the course that **best suits their interests**, not the best locally available”

“Students who study away from home have **better job prospects**... graduates who attend a local university are less likely to move and find work”

“Graduates who migrate **earn more** than those employed in their home region”

# What should I study to get a good job?

---

Which of these subjects do you think had the highest percentage of students going on to highly skilled work 15 months after their course?

Biology

English  
Literature

Geography

Psychology

# What should I study to get a good job?

---

Which of these subjects do you think had the highest percentage of students going on to highly skilled work 15 months after their course?

Biology

English  
Literature

Geography

Psychology

# What should I study to get a good job?

---

Art:	television, arts admin, web page design, tourism
Biochemistry:	forensic science, management, IT, sales
Biology:	environmental consultancy, finance, marketing
Geography:	journalism, banking, accountancy, law, sales
History:	law, finance, IT, management, computing
Law:	accountancy, banking, the media, industry, sales
Languages:	law, tourism, civil service, diplomatic service
Media Studies:	personnel, marketing, public relations
Philosophy:	law, finance, local government





# Graduate employers



Audi  
Vorsprung durch Technik



GlaxoSmithKline



Grant Thornton



FACCENDA



Unilever



Alcatel-Lucent



## 3. Make an educated choice

Finding the right university and course for you

---

**How Many Higher Education  
Institutions?**



**How Many Courses?**

# Real Degree or Fake Degree?

---

**Fake**

**Fake**

**Real!**

University College  
London

**Real!**

London Southbank  
University

**Real!**

Heriot-Watt University

**Fake**

**Fake**

**Real!**

Abertay University

# Choosing the right university is tough!

---



It's about doing the research to....

find the **right university**...

...offering you **the right course**

The UK is one of the best places to study in the world!

It's a global question

## WHERE ARE WORLD'S TOP 200 UNIVERSITIES LOCATED



### NUMBER OF UNIVERSITIES

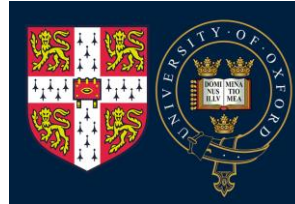
US	45	Hong Kong SAR	5	Spain	2
UK	26	Malaysia	4	Austria	2
Australia	14	Belgium	3	Taiwan	2
Germany	11	Denmark	3	Argentina	1
Japan	9	Italy	3	Russia	1
China	8	<b>INDIA</b>	<b>3</b>	New Zealand	1
Canada	8	Singapore	2	Norway	1
South Korea	8	Ireland	2	Brazil	1
Netherlands	7	Mexico	2	UAE	1
France	6	Saudi Arabia	2	Kazakhstan	1
Switzerland	6	Finland	2		
Sweden	6	Chile	2		

# Not all universities are the same

---



**RUSSELL  
GROUP**



**MillionPlus**

The Association for  
Modern Universities



# The Russell Group

---



‘So should I just apply to Russell Group Universities?’



# University Challenge

---



Which of the following Universities are not in the **Russell Group**?

Birmingham

Liverpool

Bath

Lancaster

Bristol

Royal Holloway

Coventry

Oxford

Durham

Queen Mary

Exeter

Southampton

Glasgow

St Andrew's

Goldsmith's

Sussex

Imperial

Warwick

Leicester

York

# University Challenge

---



Which of the following Universities are not in the **Russell Group**?

Birmingham

**Bath**

Bristol

**Coventry**

Durham

Exeter

Glasgow

**Goldsmith's**

**Imperial**

**Leicester**

Liverpool

**Lancaster**

**Royal Holloway**

Oxford

Queen Mary

Southampton

**St Andrew's**

**Sussex**

Warwick

York

# Research intensive vs regional/vocational

---



## **Type 1:** Research intensive universities

Academic and research focus , 'traditional' subjects, 21<sup>st</sup> century research,

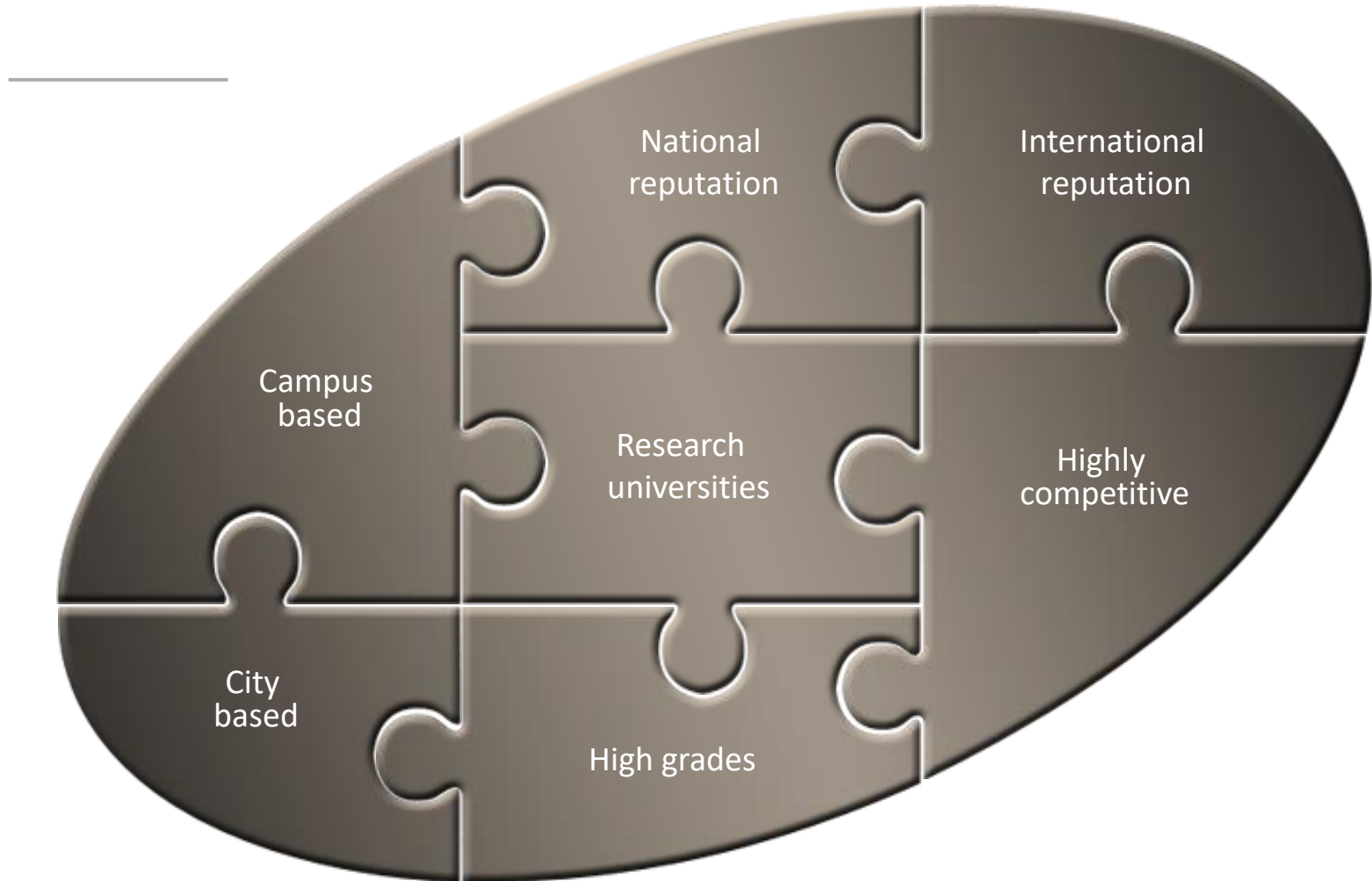
solving world problems, Russell Group and others

## **Type 2:** Regional/vocationally focused universities

Vocationally focused, greater emphasis on teaching skills and sector focused,

Millennium Plus group and others

# Research Intensive University



# What size of university?

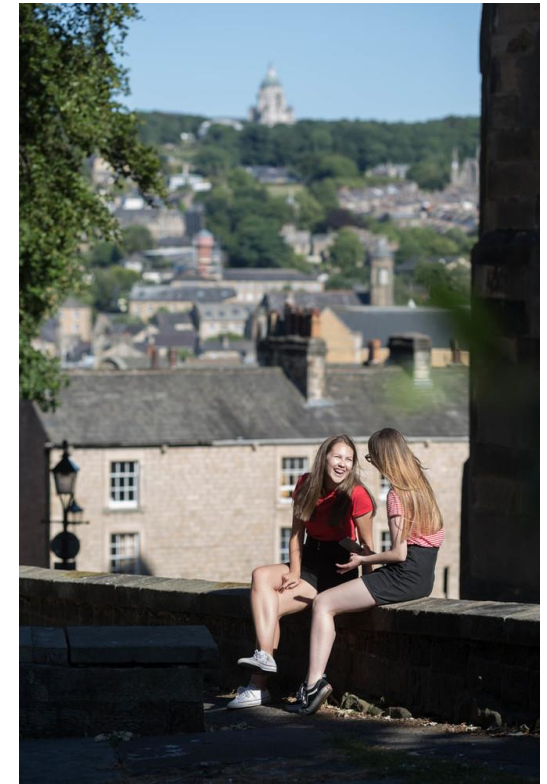
---

**Small City/ Campus based** – (10–20,000 students)

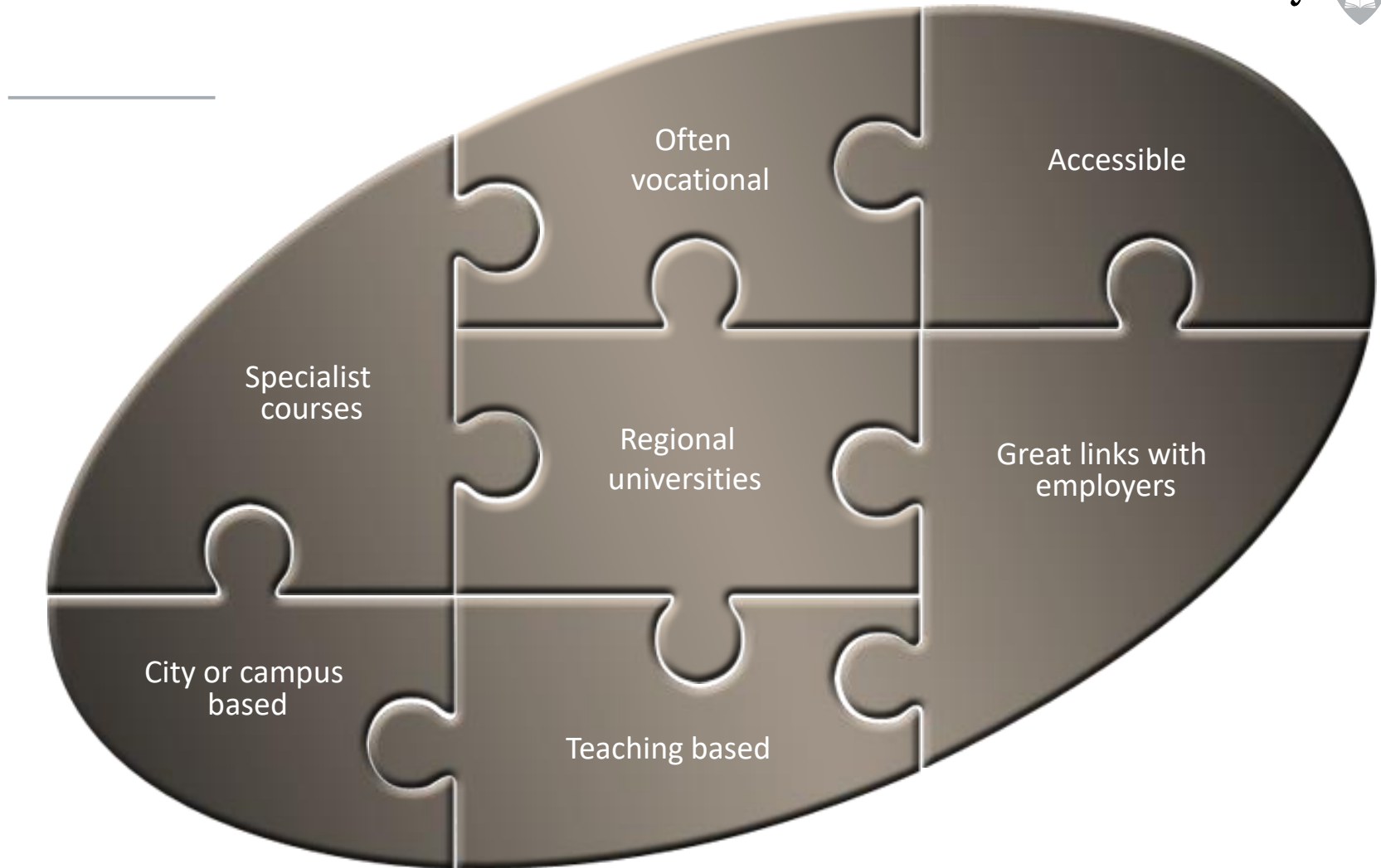
Lancaster, York, Durham, Oxford, Warwick...

**City/campus-based** – (20–40,000 students)

Manchester, Bristol, Newcastle, Leeds,...



# Regional/Vocational University



## 4. Other 'stuff'

A few other things to think about

---

# Record demand for university places



Clare Marchant UCAS CEO:

*'The number of university applicants is expected to rise from around 700,000 a year to more than a million in the next four years..*

*"Demand from 18-year-olds is rising, there's a demographic increase and international attractiveness."*







# Play Your University Cards Right!

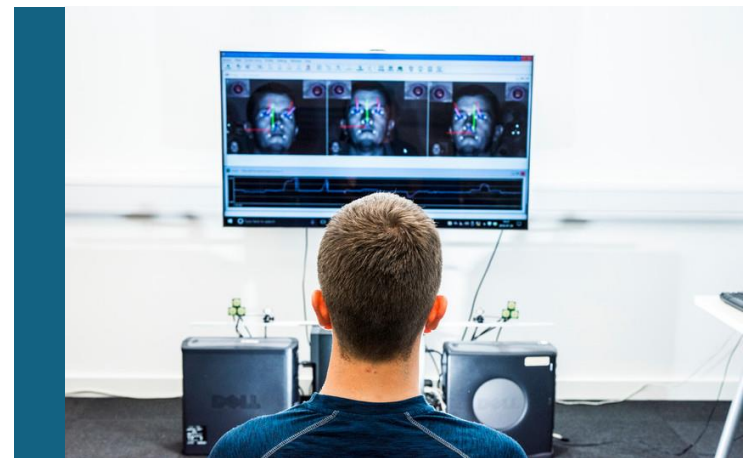
---

	Applications 2023	Accepted applicants 2023
Oxford	24,230	3,260
Cambridge	21,940	3,565
Lancaster	21,325	3,995
Southampton	45,280	5,235
York	30,240	5,185
Edinburgh	71,135	6,940
King's College	69,300	6,810
Warwick	47,130	5,825
Durham	34,150	4,655
Liverpool	43,975	6,515

# Entry requirements

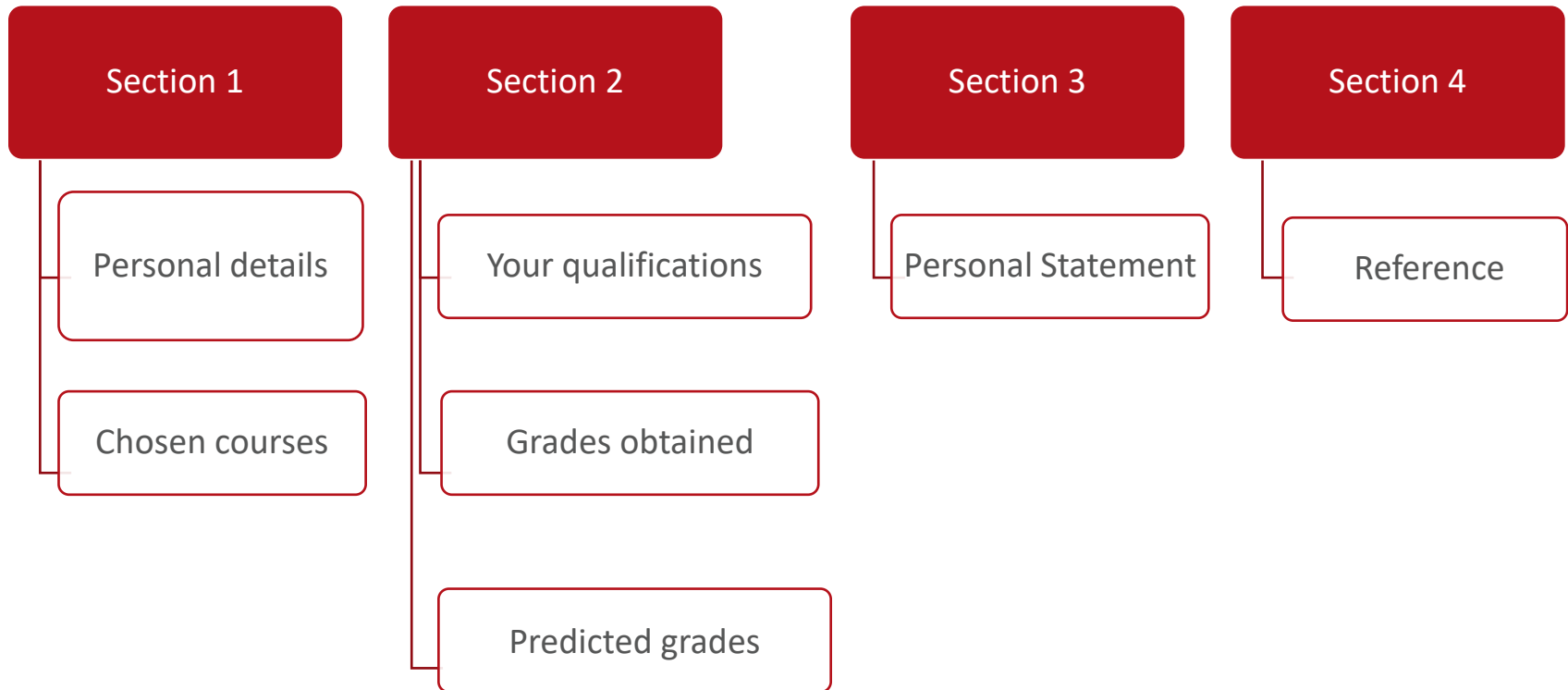
---

- Does the university accept the UCAS tariff? What qualifications do they accept?
- Does the course require an interview?
- Are specific qualifications needed?
- Does the university accept resits?



# Will you be qualified?

---



# Types of courses

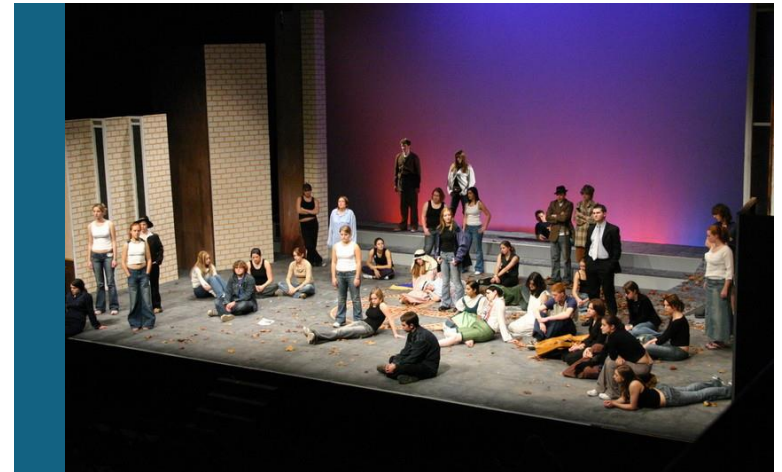
## Traditional Courses

- English
- Mathematics
- Sciences,
- Geography
- Art



## Courses Often Not Available at Sixth Form or College

- Accounting
- Medicine
- Linguistics
- Zoology



# Studying abroad

- Does the university offer a study abroad pathway for your subject?
- If not, what other options do they offer? (e.g. semester, week, field trip?)
- *Note: May have higher entry requirements than standard course*



## Biology (Study Abroad) BSc Hons

UCAS Code	Entry Year	A Level Requirements	Duration
C105	2023	AAA	Full time 48 Months

## Placement/Year in Industry

- Can you take part in a placement year?
- What support is available when finding placements and whilst you're there?



- What other careers support is available?



### Economics (Industry) BA Hons

UCAS Code	Entry Year	A Level Requirements	Duration
L111	2023	AAB	Full time 4 Years

## University facilities

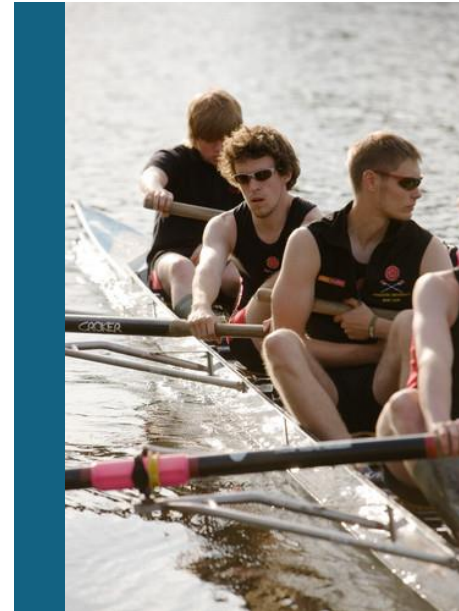
- Study Spaces
  - Library
  - Group Spaces
- Sports Facilities
- Amenities
  - Shops
  - Restaurants
  - Post Office
  - Nightlife





## Clubs and societies

- There are over 175 societies at Lancaster
- Over 80 sports teams
- Cultural Linguistic & Religious based
- Social Political & Charitable Causes
- TV, Radio Station, Cinema



## Lancaster's Scholarships – 2024 Entry

### Lancaster Scholarship

**£2,000**  
for the first year of study only

**For UK Applicants**  
paying home fees who firmly accept their offer

**AAA+ (or equivalent)**  
Plus at least 5 GCSEs grade A/7 or above

**All full-time UG degrees**  
For October 2024 entry

### Lancaster Opportunity Scholarship

**£1,000**  
per year of study

**For UK Applicants**  
from either a low participation neighbourhood and/or are care experienced

**In receipt of a contextually lower offer to study at Lancaster**  
For October 2024 entry

**All UG degrees**  
Except MBChB Medicine & Surgery

### Lancaster Global Scholarship

**£5,000**  
for the first year of entry (undergraduate only)

**For International Applicants**  
Liable for international tuition fees

**A\*A\*A (or equivalent)**  
Plus at least 5 GCSEs grade A/7 or above

**All full-time UG degrees**  
For October 2024 entry

## 5. Research

Give yourself time to do the research

---

# Research



ORGANISE IT.  
DESIGN IT.  
MAKE IT YOURS.

[UCAS.COM/HUB](https://ucas.com/hub)



UCAS

# UCAS





## Undergraduate Open Days

- Saturday 29th June
- Saturday 13th July
- Saturday 14th September
- Saturday 12th October

# Thanks for Listening



Undergraduate Prospectus



Chat to our Students



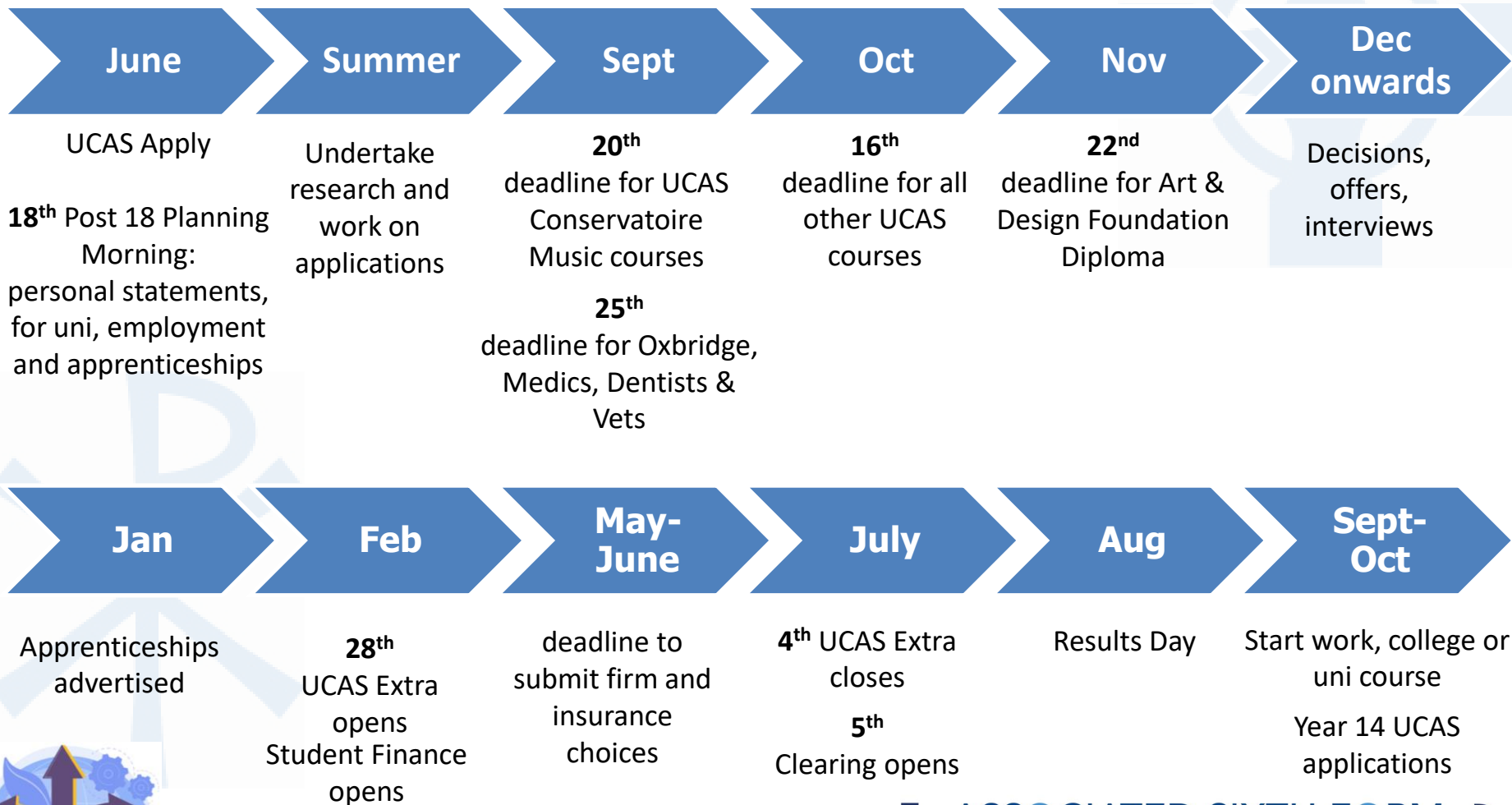
Open Days & Campus Tours



Undergraduate Courses

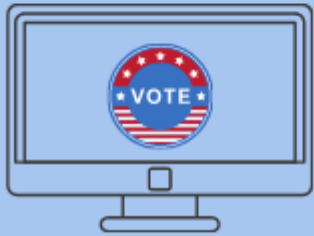
[schools@lancaster.ac.uk](mailto:schools@lancaster.ac.uk)

# Post-18 Planning Timeline



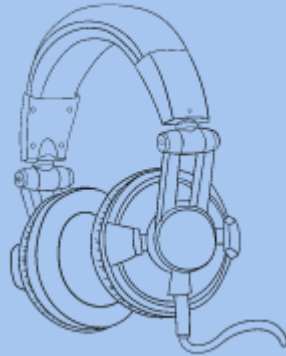
# 'Super Curricular' Activities

Read



Watch

Listen



**TED**

**BIG THINK**

**BBC**  
**SOUNDS**

**Music Week**



**GRESHAM**  
COLLEGE

The  
**Economist**

 **Alison**

**New  
Scientist**



**BBC**  
**NEWS**

**BMJ**

**OpenLearn**

 **NATIONAL  
GEOGRAPHIC**

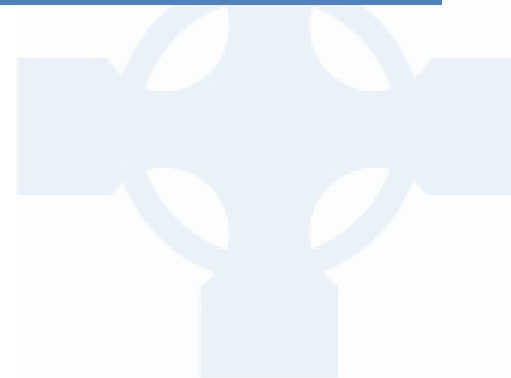
 **ASSOCIATED SIXTH FORM**  
ST AIDAN'S & ST JOHN FISHER, HARROGATE 



# 'Super Curricular' Activities


## Industry Lunchtime Talks 17<sup>th</sup> June - 4<sup>th</sup> July 2024

Mon 17 <sup>th</sup>	UCAT Preparation Workshop Sales, Marketing and Entrepreneurship
Tues 18 <sup>th</sup>	Armed Careers IT Solutions and Services Financial Life as a Medical/Dental student
Weds 19 <sup>th</sup>	Horticulture and Sustainable Solutions Architecture Sports Studies
Thurs 20 <sup>th</sup>	Art and Textiles Studies
Fri 21 <sup>st</sup>	Gap Year Programmes
Mon 24 <sup>th</sup>	Teaching and Education Acting, Theatre and Performance Design
Tues 25 <sup>th</sup>	Psychology Civil Service Careers
Weds 26 <sup>th</sup>	Studying at a Conservatoire Hospitality, Leisure, Catering, Business Management
Thurs 27 <sup>th</sup>	Researching and applying for apprenticeships Studying in Scotland – differences in the HE <u>sector</u>
Mon 1 <sup>st</sup>	Accountancy, Taxation and Financial Careers
Thurs 4 <sup>th</sup>	Legal Careers



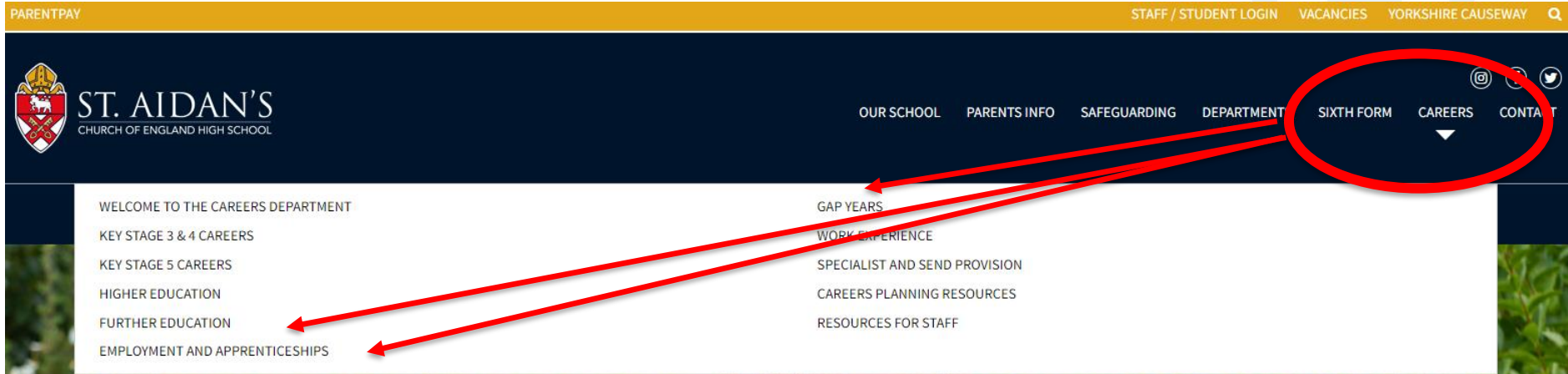
# Further Ideas

PARENTPAY STAFF / STUDENT LOGIN VACANCIES YORKSHIRE CAUSEWAY

 **ST. AIDAN'S**  
CHURCH OF ENGLAND HIGH SCHOOL

OUR SCHOOL PARENTS INFO SAFEGUARDING DEPARTMENT **SIXTH FORM CAREERS** CONTACT

- WELCOME TO THE CAREERS DEPARTMENT
- KEY STAGE 3 & 4 CAREERS
- KEY STAGE 5 CAREERS
- HIGHER EDUCATION
- FURTHER EDUCATION
- EMPLOYMENT AND APPRENTICESHIPS
- GAP YEARS
- WORK EXPERIENCE
- SPECIALIST AND SEND PROVISION
- CAREERS PLANNING RESOURCES
- RESOURCES FOR STAFF



# Further Ideas



## HIGHER EDUCATION

There are over 50,000 degree courses available at over 395 UK institutions so it is essential that you undertake some serious research to ensure you find the right degree course for you. The Careers Department have provided all the following information to help you with applying for university, conservatoire, and college. Try a university degree, before you apply, and make sure it's the right course for you. Sample lectures across a wide range of subjects given by professors and academics from universities across the UK.

### Higher Education Resources

- Personal Statement Preparation
- Researching HE Courses
- Studying in Scotland
- Using League Tables
- University Admissions Tests
- Super Curricular Engagement for Post 18 Applications
- Volunteering
- Entry Requirements for UK Medical Schools 2024
- Medical Schools Teaching Styles
- Healthcare and Veterinary Applications
- Performing Arts applications
- Law – Legal Careers and Courses
- Teaching – Careers and Courses
- Student Finance
- Understanding Student Loans
- British Army Bursaries and Scholarships
- UCAS – Ultimate Guides

### ALSO IN CAREERS

WELCOME TO THE CAREERS DEPARTMENT

KEY STAGE 3 & 4 CAREERS

KEY STAGE 5 CAREERS

HIGHER EDUCATION

FURTHER EDUCATION

EMPLOYMENT AND APPRENTICESHIPS

GAP YEARS

WORK EXPERIENCE

SPECIALIST AND SEND PROVISION

CAREERS PLANNING RESOURCES

RESOURCES FOR STAFF

## Super-Curricular Engagement for Post-18 Applications

This is the term the university admission tutors and recruiters use when talking about the wider reading and research they hope to see in the applications received. The personal statement/profile is your opportunity to illustrate a genuine interest in a subject/role/industry sector subject and what you have done to pursue this beyond the classroom.

Your subject teachers can offer ideas for how you can enhance your subject knowledge. However, below are some more general examples of how you can further your interests in readiness for preparing your post-18 applications and personal statement. It is important that you carefully and critically consider the arguments, assumptions and evidence being presented and reflect on what you have learnt. Remember, this is not an exhaustive list, more a suggestion of places to start your research:

### News Sources and Periodicals

Your chosen universities/employers may expect applicants to have a current working knowledge of their subject/industry in the news, so it is vital to stay abreast of current affairs. Reading quality news sources can be a useful way to begin to practise assessing arguments and weighing evidence and listening to articulate, intelligent debate can help you to understand how to formulate your ideas, and how to discuss your subject at interview. Some suggestions include:

- Broadsheet newspapers: The Guardian, The Times, Independent, Daily Telegraph
- [BBC News online](#)
- [Al Jazeera English](#)
- [The Economist](#)

### Digital Resources

Digital periodicals supply a steady stream of the latest topical studies and information. Many specialise in a particular area enabling you to find the latest subject specific research. Examples include:

National Geographic	The Economist	The Times Literary Supplement
New Scientist	The Stage	Music Week
History Today	Philosophical Society	Plus Maths Magazine

Part of Apple's iTunes store, [iTunes U](#) is a vast learning resource offering free educational content which you can download to your computer, iPad or iPod. Or you can visit the [Directory of Open Access Journals](#), a database with approx. 12,000 journals covering all aspects of science, technology, medicine, social science and humanities. [Bright Knowledge](#), contains articles and career profiles for most subject areas.

### Videos

Videos are a great way to engage with your subject, particularly if you are a visual learner. Examples of the organisations offering short talks and presentations in video format from influential international experts include: [Ted](#) [bigthink](#) [youtube](#)

### Short Online Courses

Many universities offer massive open online courses (MOOCs) across a wide range of disciplines. These are available via individual university websites, and online course providers, for example:

[Future Learn](#) [Class Central](#) [edx](#) [Alison](#) | [Free Online Learning](#)  
[cosmolearning](#) [openlearn](#) [openculture](#) [coursera](#)

If you are unsure which organisation is running a course you are interested in, you can also search using multiple criteria at [MooC List](#).

### University Reading Lists

Many university websites publish sample reading lists for first year courses which can be a useful introduction to a subject at undergraduate level. In addition, excellent resources have been developed for

# UCAS Timeline



Student registers for a UCAS Hub account to carry out research and start application.



Student completes all sections of the application and sends it to their school/college.



Teacher or adviser reviews the application and adds reference and predicted grades.



Applications are sent to UCAS by the school or college on behalf of the student.



Universities and colleges make their decisions on the application.

# UCAS Timeline

20<sup>th</sup> Sept: Music Conservatoires

25<sup>th</sup> Sept: Oxbridge, Medics, Vets, Dentists

16<sup>th</sup> Oct : All other UCAS

22<sup>nd</sup> Nov: Foundation Diploma in Art and Design

# UCAS References



Enter a general statement about your school/college/centre.



If applicable, enter any information about extenuating circumstances which may have impacted the applicant's education and achievement.



Outline any other supportive information specific to the applicant and relevant to the course(s) applied for that you think universities/colleges should be aware of.

# References



Application Deadlines:	
Music Conservatoires	20 <sup>th</sup> Sept
Oxbridge, Medics, Vets, Dent	10 <sup>th</sup> Oct
All other UCAS	22 <sup>nd</sup> Nov

Checked by:

## Post-Sixth Form Applications Cover Sheet

Name .....

Tutor Group .....

### Formal Examinations taken in Year 12:

Subject e.g., Applied Business	Grade Achieved

### Predicted Grades at A Level or Equivalent:

Subject	Predicted Grade

### UCAS or College Courses:

Institution (UCI or college)	Course	Entry Requirements <small>It is the responsibility of the student to ensure they are aware of all entry requirements, including grades, work experience and personal statement requirement.</small>

### Student Checklist – have you...

Used an appropriate email address?	
Provided a nominated access, (someone who can speak on your behalf)?	
Used the correct exam centre codes? St Aidan's 48237 SJF 48241 Sixth Form 48239	
A Level/equivalent subjects shown as examination results pending?	
Had your personal statement checked? <small>(If applying for a vocational course e.g., medicine, veterinary science, dentistry, nursing, midwifery, paramedic science, physio, and teaching you must have had this initialled by Careers)</small>	
Paid for your application by credit card?	
Printed a pdf version of your application form and had this checked and initialled by Careers (SJA) or Sixth Form Office (SJF)?	

You must answer YES to all of the above questions before you hand your completed application form to the Sixth Form Office - incomplete forms will be returned to you.

To ensure that your reference can be accurately written, please include any information in the spaces below. Please note, by sharing this information you are consenting to it being included in your reference.

### Extenuating Circumstances - optional, this section may be left blank.

If applicable, enter any information about extenuating circumstances and achievement - past and present. You must include any information about extenuating circumstances by examination boards. E.g., a disability, serious personal circumstances.

.....

.....

.....

.....

.....

.....

.....

.....

.....

.....

### ANY OTHER INFORMATION - optional, this section may be left blank

Any other additional information e.g., outside clubs and interests, positions of responsibility, part-time employment.

### Supporting Information - DO NOT LEAVE THIS SECTION BLANK

Outline any other recent activities specific to you that you think universities/ college will value. Use an additional sheet if necessary. Use an additional sheet if necessary. Use an additional sheet if necessary.

.....

.....

.....

.....

.....

.....

.....

.....

.....

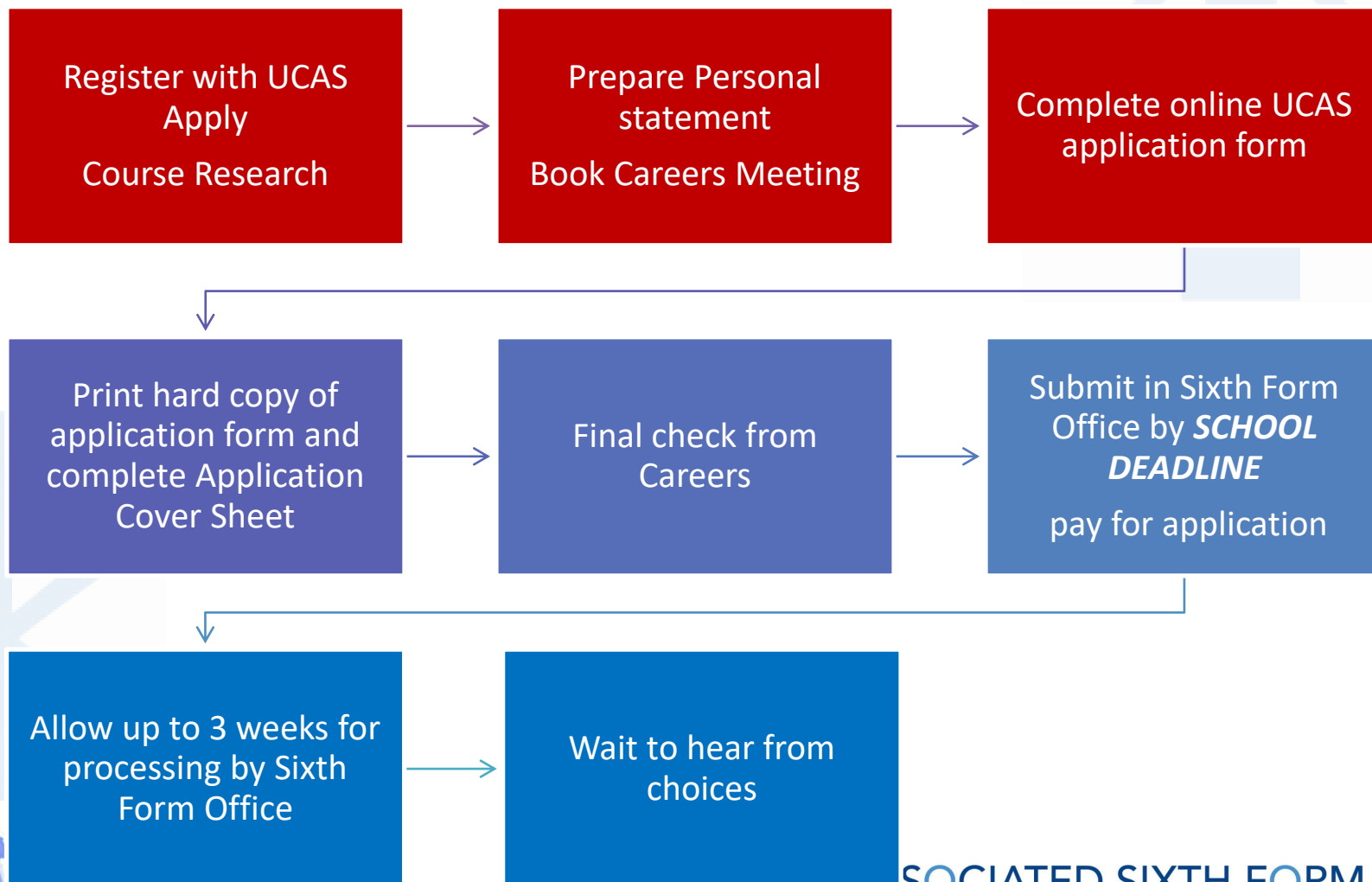
.....

- I consent to information provided in this form being used to support my reference and understand that school will use their judgement in deciding what to include.
- I am aware that a late submission of this form could affect the reference submitted.

Signed (Student) .....

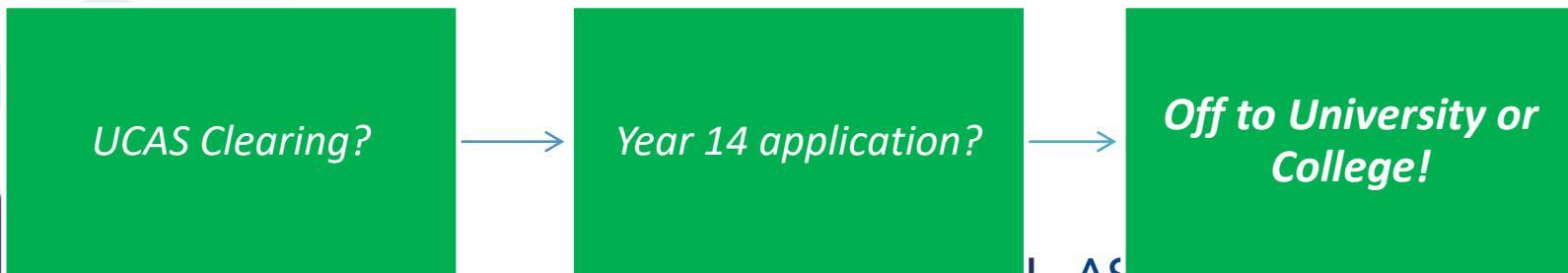
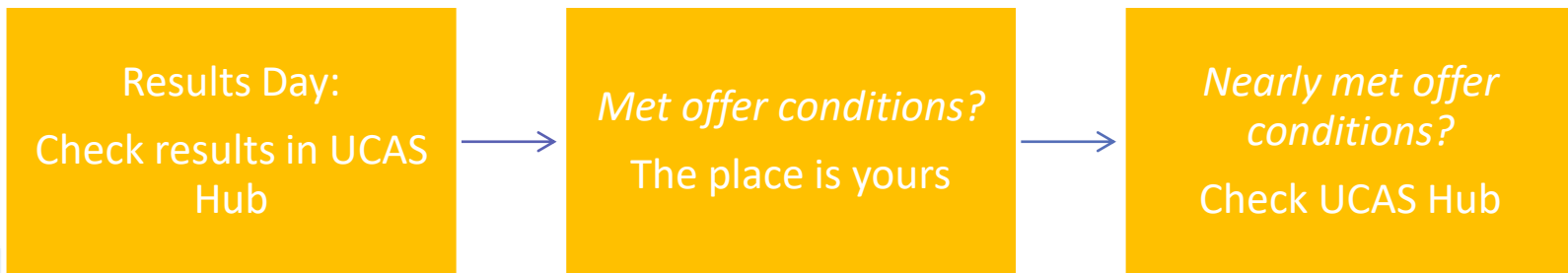
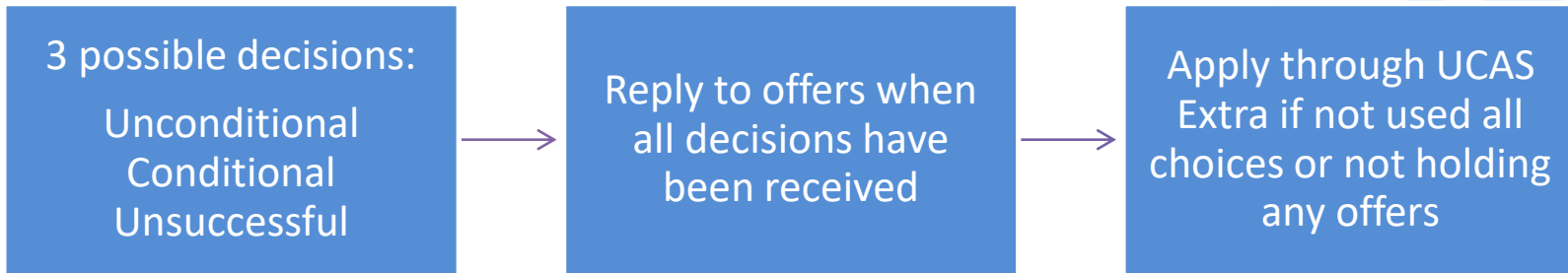
Signed (Parent/Career) .....

# HE Application Process...





# Decisions and Replies...



# In Summary

1

Research opportunities that **suit you**

2

Set **yourself** clear and realistic **goals**

3

Undertake **supporting activities**

4

Seek help as appropriate and **meet deadlines**

# Careers Department



**01423 815834**



**careersstaff@staidans.co.uk**



**Open 8.30am-4.30pm Monday-Friday**



**Parents/carers are welcome to attend**